

050914

RECEIVED
LARAMIE COUNTY
CHEYENNE, WY.

CERTIFIED LAND CORNER RECORDATION

DESCRIPTION OF CORNER EVIDENCE FOUND, AND ORIGINAL RECORD (1871) 9 APR 9 08

Found no evidence of previous monumentation.

1/4
S.14 S.13
T.14N., R.63W.
6th P.M.

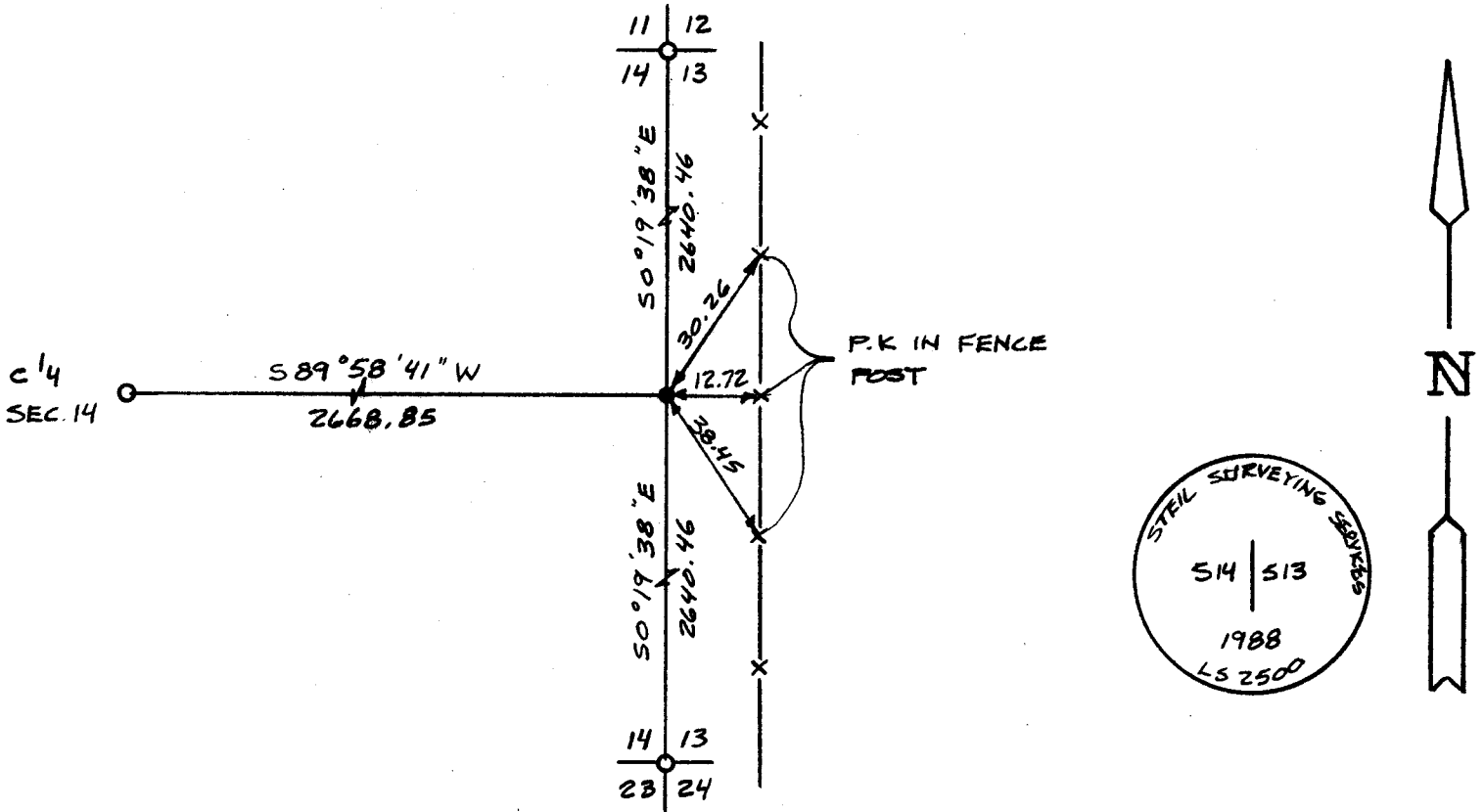
G.L.O. Record: Granite stone 18" x 10" x 7" set by Edwin James & Alfred M. Rogers, Deputy Surveyors, June 16, 1871.

DESCRIPTION OF MONUMENT AND ACCESSORIES ESTABLISHED TO PERPETUATE THE ORIGINAL LOCATION OF THIS CORNER:

At the corner: Set 2 1/2" x 30" Aluminum Pipe with 3" Aluminum Cap at proportionate distance between NE & SE corner of Sec. 14, 11' West of N-S fence, projecting 2" above ground encircled with stone and stamped as shown below.

Accessories : See ties below.

SKETCH, WITH COURSE AND DISTANCE TO ADJACENT CORNER IF DETERMINED IN THIS SURVEY. (May Sketch or Paste Reproduction on Reverse Side.)



I, John A. Steil certify that I have carefully performed or reviewed the work done on the diagrammed corner as reported on this recordation form and approve the same.

John A. Steil L.S. 2500
Signature of Surveyor Registration No.

STATE OF WYOMING,
Office of Clerk and Recorder,
County of _____

This "corner record" was filed for record on the _____ day of _____, 19____, was noted on the cross-index plat and is assigned page No. _____, in book No. _____.

Cross Index No.	County Official			Mer.
	L-21	T. 14N	R. 63W	
_____	_____	_____	_____	Mer.
_____	_____	_____	_____	Mer.
_____	_____	_____	_____	Mer.
_____	_____	_____	_____	Mer.
_____	_____	_____	_____	Mer.
_____	_____	_____	_____	Mer.
_____	_____	_____	_____	Mer.